



# School Improvement Plan

## 2025-26



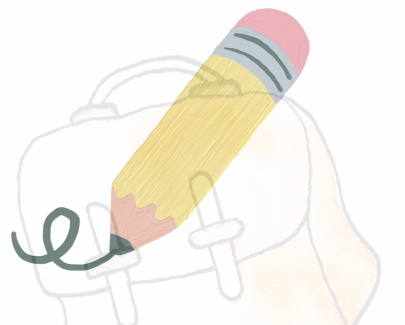
### ***Raising Attainment***

*We will...*

**Continue to develop our approaches to the teaching of writing.**

**Promote digital wellbeing and the use of digital technologies to support and enhance learning.**

**Continue to develop our approaches to assessing learning.**







# School Improvement Plan

## 2025-26



### ***Health and Wellbeing & Inclusive Practices***

*We will...*

**Continue to work with 'Place2be' to provide family counselling and parenting support.**



**Increase awareness of supporting pupils with ADHD.**



**Track pupil wellbeing and continue to offer appropriate support when needed.**







# School Improvement Plan

## 2025-26



### ***Learning, Teaching and Assessment***

*We will...*

**Increase staff confidence in linking the Sustainable Development Goals to planning and teaching.**



**Develop approaches to Outdoor Learning.**



**Explore how we can support pupils to lead their learning.**

